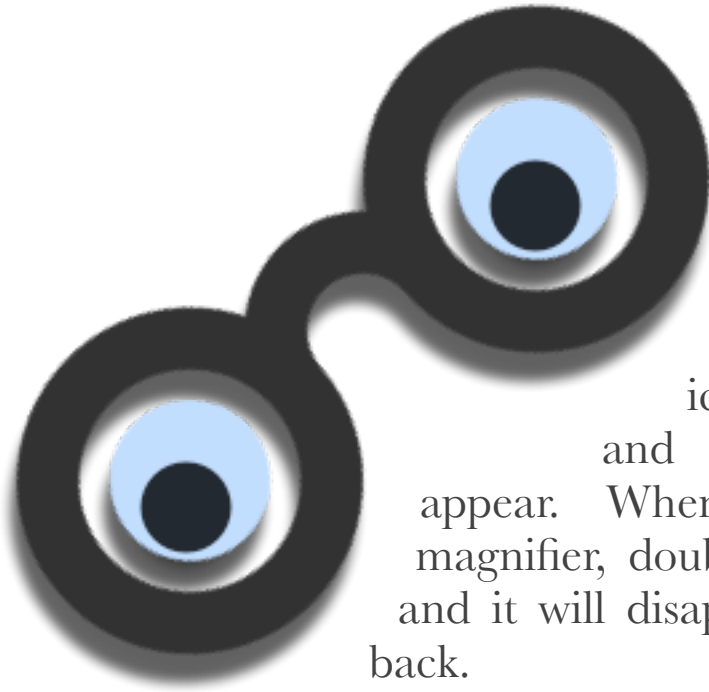


# iPiece 1.2

Thank you for trying iPiece by Old Jewel Software.



iPiece will show a magnifier window right next to your cursor. Whenever you want to see things closer, double-click the eyeglasses icon in the menu bar and iPiece's magnifier will appear. When you're done with the magnifier, double-click the icon again and it will disappear until you want it back.

# System Requirements:

iPiece requires Mac OS X 10.4 or later to run.

It should work on any Macintosh that will support Mac OS X 10.4; however, iPiece makes use of OpenGL, so a Macintosh with a graphics card capable of supporting Quartz Extreme will be able to use iPiece much more effectively.

# Installing iPiece:

To install iPiece:

- Mount the disk image labeled "**iPiece**".
- In the disk window that appears, drag the icon labeled "**iPiece**" to the icon labeled "**Applications**" and let go.
- If you want, you can move iPiece to any other folder on your hard drive. It will work from anywhere.
- Eject the disk image labeled "**iPiece**".

# Uninstalling iPiece:

To uninstall iPiece:

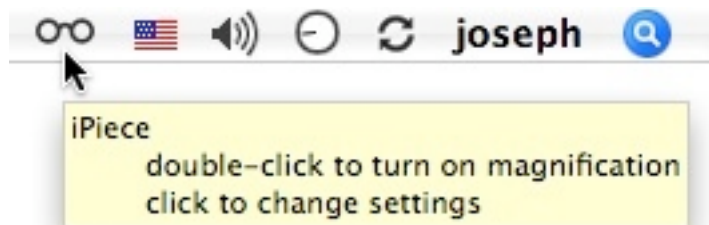
- Click the **iPiece** icon in the menu bar to show the settings window if it's not yet visible.
- Click the button labeled "**Quit**" to quit iPiece.
- Drag the iPiece icon to the trash.

# Starting iPiece:

To run iPiece, simply double-click its icon in the Applications folder.



An icon of a pair of eyeglasses will appear immediately in the menu bar. This icon is how you will control iPiece.



# Turning On Magnification:

To turn on the magnifier window:

- Start iPiece if it hasn't started already.
- Double-click the **iPiece** icon in the menu bar.



iPiece's magnification window will appear. Whatever is directly under the mouse will appear magnified in a window nearby. As you move the mouse around, the magnifier will follow the mouse, so whatever is under the mouse is always magnified right beside it.

# Turning Off Magnification:

When you're done using the magnifier, it's very simple to turn it off until you need it again.

To turn off the magnifier:

- Double-click the **iPiece** icon in the menu bar.

The magnifier will disappear.

The next time you want to use it, just double-click the iPiece icon in the menu bar again.

# Using the Hot Keys:

If you prefer to use your keyboard to control iPiece, then you can ignore the icon in the menubar and instead use globally defined hot keys.

By default, you can toggle iPiece on and off using the hot key **shift-control-Z**.

To turn on the magnifier using the keyboard:

- Hold down the **control** and **shift** keys while pressing the **Z** key.

The magnifier will appear beside the cursor.

To turn the magnifier back off using the keyboard:

- Hold down the **control** and **shift** keys while pressing the **Z** key again.

The magnifier will disappear.

iPiece will also allow you to zoom in & out using hot keys and to enlarge or reduce the size of the area being magnified. By default, these extra options are turned off, but they can be turned on in iPiece's Settings Window.



# Temporarily hiding the Magnifier:

You may find that you want to temporarily hide the magnifier so that it doesn't block other things on the screen.

To temporarily hide the magnifier:

- Move the mouse to the edge of your screen.

The magnifier will disappear until you move the mouse back away from the edge of the screen.

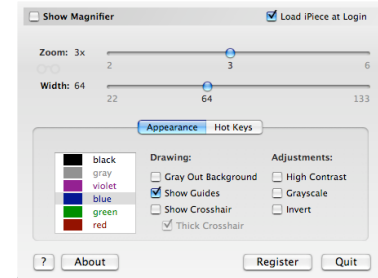
# Changing iPiece's Settings:

To change iPiece's settings:

- Click the **iPiece** icon in the menu bar.

iPiece's settings window will appear under the menu bar. Using this window, you can:

- change the zoom (magnification level) of the magnifier.
- change the size of the area the magnifier magnifies.
- set iPiece to load automatically when you log in.
- change iPiece's hot key settings
- set iPiece to draw a crosshair in the magnifier for the cursor.
- have iPiece do some simple adjustments of the image in the magnifier.
- change the way iPiece draws its magnifier



## Changing the Zoom:

To change the magnification of the image under the mouse:

- Drag the slider labeled "**Zoom**".

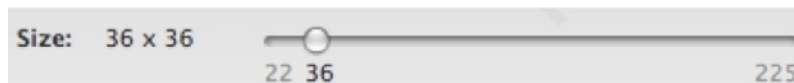


As you drag, the magnifier window will adjust to the new magnification, and the zoom level will appear to the left of the slider.

## Changing the Size:

To change the size of the area that iPiece magnifies:

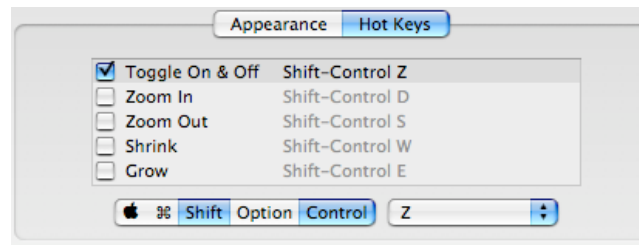
- Drag the slider labeled "**Size**".



As you drag, the magnifier window will adjust to the new size, and the dimensions of the area will appear to the left of the slider..

# Changing the Hot Key Settings:

By default, iPiece will let you toggle the magnifier on & off in any application using the key combination control-shift-Z. You can change this combination to almost anything you could think of, and you can also set up several other hot keys. The hot keys that iPiece will allow you to use are:

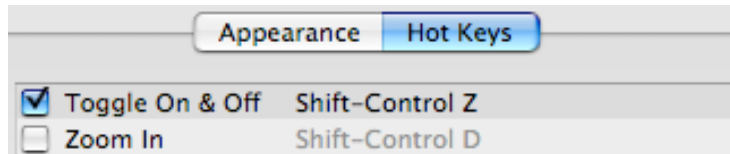


- **“Zoom In”** (control-shift-D) - to increase the magnification.
- **“Zoom Out”** (control-shift-S) - to decrease the magnification.
- **“Shrink”** (control-shift-W) - to reduce the size of the area being modified.
- **“Grow”** (control-shift-E) - to increase the size of the area being modified.

# Turning a Hot Key On:

To turn on one of these hot keys:

- Click the **iPiece** icon in the menu bar to bring up the Settings Dialog.
- Click the tab labeled “**Hot Keys**”
- In the Hot Keys list, click the checkbox for the hot key you would like to enable.



Turning on the hot key for “Zoom In” will naturally also turn on the hot key for “Zoom Out.” Similarly, enabling the hot key for “Grow” will also enable to icon for “Shrink.”

# Turning a Hot Key Off:

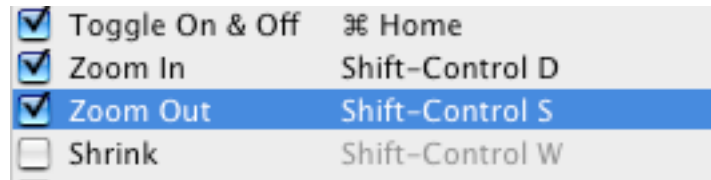
To turn off one of these hot keys:

- In the hot keys table, click the checkbox for the hot key you would like to disable.

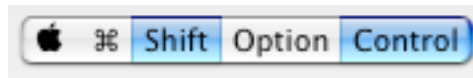
# Changing a Key Combination:

To change the key combination for one of these hot keys:

- Select the hot key you would like to change:



- Click the buttons for the modifiers you would like to use:



- Choose the key you would like to use from the popup menu:

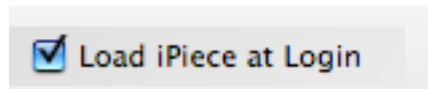


# Making iPiece Load at Login:

You will probably want to have iPiece load automatically when you log in. This way, the magnifier will always be available to you in the menu bar.

To have iPiece start up automatically when you log in:

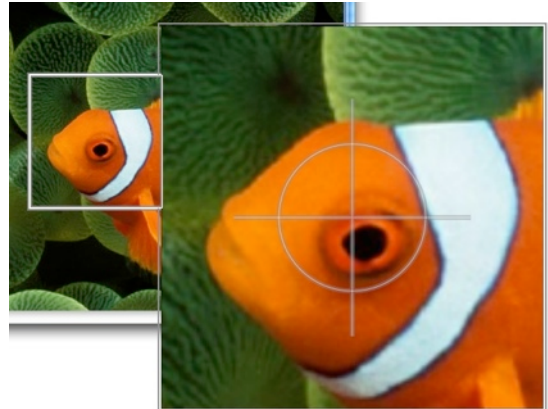
- Click the **iPiece** icon in the menu bar to show the settings window if it's not yet visible.
- Check the checkbox labeled "**Load iPiece at Login**" in the upper right of the settings window.



From now on, whenever you log in, iPiece's icon will appear for you in the menu bar, easily accessible when you want to turn on the magnifier.

# Seeing Where the Mouse Is:

iPiece can show you where the mouse is inside the magnifier by showing a special crosshair. The crosshair looks like a circle with a plus sign. The mouse is located exactly at the point where the two lines of the plus sign meet.



To turn on the crosshair:

- Click the **iPiece** icon in the menu bar to show the settings window if it's not yet visible.
- Click the tab labeled **"Appearance"**
- Check the checkbox labeled **"Show Crosshair"**.

The crosshair will immediately appear in the magnifier.



# Seeing What is Being Magnified:

By default, iPiece will draw a light box around the cursor to show you exactly what part of the screen is being magnified. You can choose to turn off these cursor guides in the settings window.

To turn off the cursor guides:

- Click the **iPiece** icon in the menu bar to show the settings window if it's not yet visible, then click the tab labeled **“Appearance.”**
- Uncheck the checkbox labeled **"Show Cursor Guides"**.

The cursor guides will no longer be drawn around the mouse.

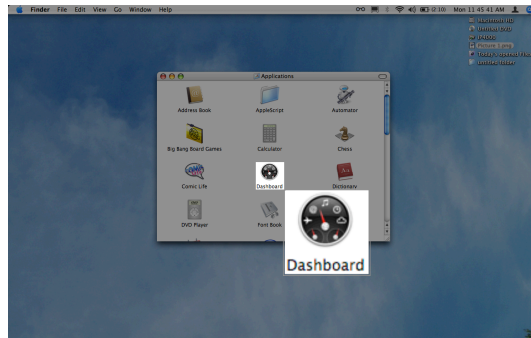
To turn the cursor guides back on:

- Click the **iPiece** icon in the menu bar to show the settings window if it's not yet visible, then click the tab labeled **“Appearance.”**
- Check the checkbox labeled **"Show Cursor Guides"**.

The cursor guides will be drawn around the mouse from now on.

# Focusing on the Magnified Area:

iPiece can make the area it's magnifying more apparent by graying out the rest of the screen. If you choose, you can have only the area under the mouse appear clearly while all other parts of the screen are overlaid with gray.



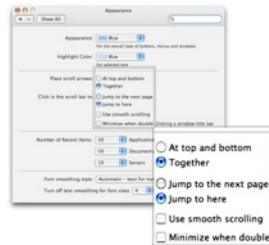
To make iPiece gray out the screen:

- Click the **iPiece** icon in the menu bar to show the settings window if it's not yet visible, then click the tab labeled **“Appearance.”**
- Check the checkbox labeled **"Gray Out Screen"**.

The screen will become slightly gray aside from the area around the mouse.

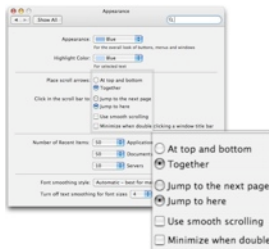
# Adjusting the Magnified Image:

iPiece has several options to adjust the image shown in the magnifier to make the image easier to see for some people.



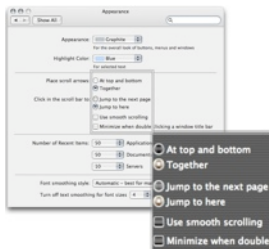
## High Contrast

Increases the contrast of the image in the magnifier.



## Grayscale

Reduces the saturation of the image in the magnifier so that only grays appear.



## Invert

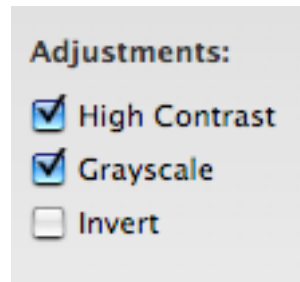
Inverts the image shown in the magnifier. White becomes black. Blue becomes yellow, etc.

iPiece can use any or all of these at the same time, so you could, for instance, use a high contrast grayscale adjustment in the magnifier.

To turn on one of these adjustments:

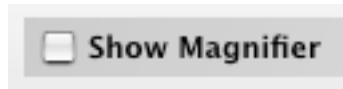
- Click the **iPiece** icon in the menu bar to show the settings window if it's not yet visible, then click the tab labeled **“Appearance.”**
- Check the checkbox for the adjustment you would like to use.

The changes will take effect in the magnifier immediately.



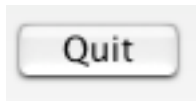
# Toggling the Magnifier in the Settings Window:

You can also turn the magnifier on and off in the Settings window by toggling the checkbox labeled “**Show Magnifier**”.



# Quitting iPiece:

If you don't want iPiece to appear in the menu bar anymore, you can quit it by clicking the button labeled “Quit” in the Settings Window.



When you quit iPiece, its icon disappears from the menu bar. It will, however, appear the next time you log in if you have set iPiece to load at login.

# Reading the Manual:

To view iPiece's User Manual at any time, click the help icon in the lower left corner of the settings window.

- Click the **iPiece** icon in the menu bar to show the settings window if it's not yet visible.
- Click the help icon (labeled “?”)



# Reporting a Bug:

Bugs, feature requests and general technical support can always be had by contacting [ipiecesupport@old-jewel.com](mailto:ipiecesupport@old-jewel.com).

Inside iPiece, you can report a bug by Opening the settings window, clicking the button labeled “**About**”, and clicking the words “**Report a Bug**”

## Checking for a Newer Version:

The latest version of iPiece is always available at <http://www.oldjewelsoftware.com/products/iPiece/>

## Giving Yourself a Pat on the Back:

Congratulations. Most people don't keep reading a user manual this far. Yes, it is dry and simplistic, in the grand tradition of software user manuals, but hopefully you've learned something new about how to use iPiece.

There's just one more section to go, and then the Release Notes. After that, you should have a soda, or at least an orange juice. Or if you want to be really adventurous, try a freshly made beet and carrot juice. Yum.



# Registering iPiece:

iPiece is shareware, and you really should register it if you find it useful.

After you've been using iPiece for a while, it will begin to show a register reminder every time you try to open the Settings window. You can choose to keep using iPiece without registering by clicking the button labeled "**Not Yet**". The regular Settings window will then appear.

To register iPiece:

- Click the **iPiece** icon in the menu bar to show the settings window if it's not yet visible.
- Click the button labeled "**Register**"
- You will be taken to Old Jewel Software's registration page.



Once you have purchased a registration code, you should receive a verification email shortly that will give you instructions on finishing the registration process.

iPiece costs \$9.95 USD for a single user license.

# Release History:

## 1.2 7/2/2007

- Added an option (off by default) to gray out the screen around the magnified area to make the area being magnified more visible.
- added an option to show a thicker crosshair
- You can now choose the accent color of iPiece from a list of 6 colors.
- The crosshair's colors will now invert if you choose to invert the magnifier
- rearranged preferences UI
- iPiece now sets itself to start up at login the first time it's launched. This of course can be turned off.

## 1.1 11/25/2006

- Added customizable hot keys for Toggling magnification, zooming in & out, and growing/shrinking the sample area.
- iPiece will now show the magnification window at startup if it's set to. Before, iPiece would default to having the magnifier off when it first loaded.
- You can now change settings when the magnifier is turned off.

- iPiece used to temporarily hide the magnifier when the user pressed the control and shift keys down. This is no longer needed now that we have global hot keys.

### **1.0.1 7/12/2006**

- Improved the appearance of the crosshair.
- Improved the way the settings window is displayed.
- Added the ability to turn off the cursor guides which show exactly which part of the screen is being magnified.

### **1.0 7/7/2006**

- Initial Public Release.