



Genuine Fractals 5

User Guide

Contact Information

onOne Software, Inc.
15350 SW Sequoia Parkway
Suite 190
Portland, OR 97224
Tele: 503-968-1468
Fax: 503-968-1469

www.ononesoftware.com

Technical Support

www.ononesoftware.com/support.php

Sales

For sales please call 1-888-968-1468

© 2007 onOne Software, Inc. All rights reserved. onOne Software and Genuine Fractals are registered trademarks of onOne Software, Inc. The onOne Software logo is a trademark of onOne Software, Inc. Adobe, Photoshop and Photoshop Elements are trademarks of Adobe Systems, Incorporated. Mac, OS X and the Mac logo are trademarks of Apple Computer, Inc. Microsoft, Windows and their logos are trademarks of Microsoft, Inc., registered in the U.S. and other countries. All other trademarks are the property of their respective owners.

Contents

- Genuine Fractals 5..... 5
 - System Requirements..... 6
 - Installation..... 6
 - Registration..... 7
 - Technical Support..... 7
- Understanding Resolution..... 8
 - How Many Pixels Do I Need?..... 8
 - Why Should I Use Genuine Fractals?..... 8
- Getting Started..... 10
 - When should I use Genuine Fractals?..... 10
 - Launching Genuine Fractals..... 10
 - The Genuine Fractals 5 Interface..... 11
 - Navigating the Preview..... 12
 - Adjusting the Image Size..... 13
- Using Genuine Fractals..... 14
 - Cropping Tool 14
 - Using Document Size Presets..... 14
 - Texture Control..... 16
 - Sharpening..... 17
 - Film Grain..... 17
- Using STiNG Files..... 19
 - What is a STiNG File?..... 19
 - Saving STiNG Files..... 19
 - Opening STiNG Files..... 20
- Automating Genuine Fractals..... 20

Genuine Fractals Preferences..... 20

Recording an Action.....20

Menus..... 21

Supported File Types..... 23

Shortcuts.....23

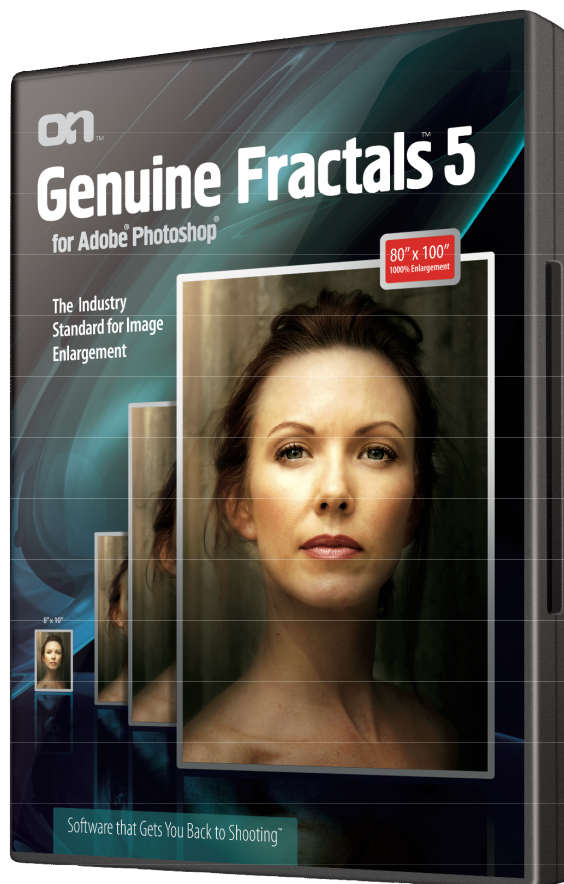
Genuine Fractals 5

Welcome to Genuine Fractals™ 5! We at onOne Software are very proud to be the makers of the extremely popular Genuine Fractals product, and we're especially excited to offer this new version. Genuine Fractals 5 represents a significant leap forward in utility and ease of use because of major changes we've made to the product.

Users new to Genuine Fractals will discover an easy, intuitive way to resize their digital photographs, while “old hands” will find that the application they've relied on for years has reemerged with all their favorite Genuine Fractals features and the same powerful scaling capabilities along with great new features, a fresh look and a much simpler and more streamlined workflow.

Genuine Fractals 5 is fully integrated into Adobe® Photoshop® as an automation plug-in that now separates file saving and scaling operations, so that you can use Genuine Fractals to scale any file type, not just STiNG. Previously, in order to scale up your images, it was necessary to first save them as STiNG files, then close them and reopen them again. While Genuine Fractals 5 still allows you to create and save STiNG files, you can now skip that process and do all your image scaling with Genuine Fractals – regardless of the image format – without ever leaving Photoshop and without having to save and reopen the image files.

Genuine Fractals updated cropping feature including Document Size Presets allows you to crop and resize all in one step. Plus the new Sharpening and Film Grain controls save you several steps in Photoshop when resizing files for printing.



System Requirements

Macintosh

- *Mac OS X 10.4.4 or Higher*
- *1 GHz or faster G4, G5 or Intel Core Processor(s)*
- *512 MB RAM (1GB+ recommended)*
- *100MB hard disk space for installation*
- *Adobe Photoshop CS2 (9.0.2), CS3*
- *Internet Connection & Flash 8 player*
- *Adobe Acrobat Reader*

Windows

- *Windows XP SP2, Vista or Higher*
- *1 GHz or faster Pentium 4 processor(s) or equivalent*
- *512 MB RAM (1GB+ recommended)*
- *50MB hard disk space for installation*
- *Adobe Photoshop CS, CS2, CS3 or Elements 4 or 5*
- *Internet Connection & Flash 8 player*
- *Adobe Acrobat Reader*
- *Microsoft dotNET Framework 2.0 or higher*



Genuine Fractals 5 is an automation plug-in and is only designed to work with the above listed versions of Photoshop and Photoshop Elements. It will not work in other applications designed to work with Photoshop Plug-ins.

Installation

To install Genuine Fractals, follow the installation instructions that come with the CD or download. These can be found on the quick installation card or in the Read Me file. Genuine Fractals 5 will remove any previous version of Genuine Fractals in the version of Photoshop that is installing into.

Macintosh

- *The installer installs all necessary files into all supported versions of Photoshop and Photoshop Elements.*
- *If more than one copy of the same version of Photoshop or Photoshop Elements is found, Genuine Fractals 5 will be installed in all of them.*
- *Genuine Fractals 5 is installed into the "Plug-Ins" folder inside of the /Applications/Adobe Photoshop/ directory.*
- *The Genuine Fractals Preferences files on the Macintosh are created in the installing user's Library/Preferences/ directory.*
- *Any other required files will be installed in your Applications directory.*

Windows

- *If the installer detects multiple versions of Photoshop or Photoshop Elements it will ask which version it should be installed into.*
- *The installer may be run multiple times to install Genuine Fractals into multiple versions of Photoshop or Photoshop Elements.*
- *Genuine Fractals 5 is installed into the "Plug-Ins" folder inside of the /Program Files/Adobe/Photoshop/ folder.*
- *Any other required files will be installed in your Program Files/ onOne Software directory.*

Registration

It is important to register your copy of Genuine Fractals 5 so we can provide you with the best possible service. Registered users of Genuine Fractals 5 are eligible for technical support, free updates and information regarding new versions and products, discounts and special offers on new products. The Registration application will launch automatically after you install Genuine Fractals and will guide you through the registration process.

Your serial number is located on a sticker inside the Genuine Fractals CD case or in your email purchase confirmation. You will need to enter that number to personalize your copy of Genuine Fractals.

Technical Support

Technical Support is available directly through the onOne Software web site. Please fill out an online support form at www.onOnesoftware.com/support.php for the quickest response. See the contact page at the beginning of the guide for additional contact information.

Before contacting support please check the onOne website for frequently asked questions, how-to videos and troubleshooting tips.

When contacting technical support, please be at your computer and have the following information available:

- *Your Genuine Fractals*+ serial number*
- *Your computer configuration*
- *Your question or a description of the difficulty you're experiencing - what specifically occurs and when*

Take note of any displayed error numbers or messages and any other information you think may be relevant.

Understanding Resolution

How Many Pixels Do I Need?

That's a common question that we hear. To answer it you need to know two things:

- *the size of the print you need to make*
- *the resolution that your printer needs for the best results*

The size of the print is simply however large a print you would like to make. This may be limited by the size of your printer. The resolution that your printer needs may be a little trickier to figure out. Resolution is the density of the pixels for a given distance, usually measured in pixels or dots per inch. Most modern inkjet printers print anywhere from 1200 to 4800 dots per inch (what the printer manufacturers really mean is 1200-4800 droplets of ink per inch). Inkjet printers use many tiny round droplets of relatively few, 4-12 ink colors to reproduce one square pixel in your image that could be any of millions of colors.

A common mistake is to set the resolution of the file to the resolution of the printer. In all but a few special printers this will result in huge files that will not print well, if at all. The secret is that the human eye can not see much more than 250-300 pixels per inch. So the ideal resolution for your files should be close to this and be an even multiple of the printers resolution.

	Good	Better	Best
Epson	180	240	360
Canon	150	200	300
Hewlett Packard	150	200	300
Dye-Sublimation	300	300	300
Photo Labs	200	250	300

Once you know the print size and resolution it is easy to use Genuine Fractals 5 to resize your file to the desired output. Simply input the resolution and then either the print width or height. You'll see that the corresponding dimension is automatically filled in by Genuine Fractals 5 based on the proportions of your image.

Keep the proportions in mind because the proportions of films, digital camera sensors and papers can all be different. For example most digital cameras sensors are proportioned so that the height is two thirds the width or 1:1.5; While the most common paper size, in the US, is letter which is 8.5x11 inches or a about 1:1.25.

These kinds of proportion mis-matches are common and require that the original image be cropped to fit the proportions of the paper size. If your image cannot be cropped without ruining the composition then you will need to adjust your print size to longer dimension.

Why Should I Use Genuine Fractals?

Resizing an image larger than the original size requires that new pixels be created. This process is called interpolation or resampling. There are many mathematical ways, called algorithms, to do this. The most common method used by many pixel editing applications is called Bicubic Inter-

User Guide | Genuine Fractals 5

polation. Bicubic along with its newer variants bicubic smoother and bicubic sharper work by averaging a small group of neighboring pixels to determine the color value of the new pixels to be added. While this technique is fast, it does not distinguish edges so there is a uniform loss of sharpness and detail across the image.

Genuine Fractals 5 patented algorithms work differently. It starts by analyzing ever-decreasing sizes of pixel blocks in your image looking for repeating natural patterns at different sizes. These are known as fractals. Fractals are common, naturally repeating patterns found everywhere. For example, a river system viewed from space has the same shape as the veins in a leaf. These are both fractal patterns at very different scales. The great thing about fractal patterns is once you find them they can be scaled to any size without loss in detail. This allows Genuine Fractals 5 to resize your image over 1,000% without losing sharpness and edge detail.

Getting Started

When should I use Genuine Fractals?

Genuine Fractals 5 should be used as one of the last steps in your workflow before printing. The power of Genuine Fractals 5 is in the concept of resolution on demand. You can work with a modest size file, which makes your editing faster and takes less hard drive space and memory. Then when you are ready to output your file you resize it with Genuine Fractals to the desired size and sharpen it for output. This also means that you don't have to keep multiple versions of a file at different print sizes, you just create what you need on-the-fly. Genuine Fractals 5 now supports layered Photoshop files so you can maintain all of your layers, of any type, throughout the entire process.

Launching Genuine Fractals

Genuine Fractals 5 is an automation plug-in that you use inside of the host application, Photoshop or Photoshop Elements. It is not a standalone application. To launch Genuine Fractals 5 you need to open the image you need to resize in Photoshop or Photoshop Elements and do any of the following:

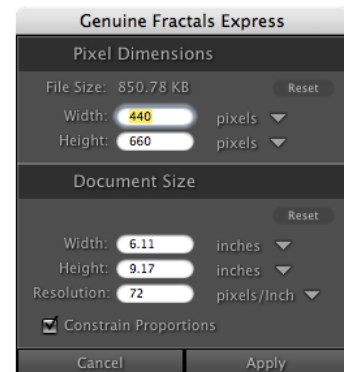
- Select *Genuine Fractals 5* from the *onOne* menu
- Select *Genuine Fractals Express 5* from the *onOne* menu
- Select *Genuine Fractals* from the *File > Automate* menu
- Select *Genuine Fractals Express* from the *File > Automate* menu

Your image will open in Genuine Fractals or the Genuine Fractals Express version depending on your selection.



Above: Genuine Fractals 5, choose this option if you need to crop your image or if you want to take advantage of the Texture Control, Sharpening and Film Grain controls.

Right: Genuine Fractals Express, choose this option if you only need to proportionally resize your image



The Genuine Fractals 5 Interface



A: Image preview area

B: Navigator: displays overview of the entire image along with a red box marking the area displayed in the preview area.

C: Pixel Dimensions: Shows the pixel width and weight and allows you to change them. Also displays the original file size and the resized magnification percentage at the current settings.

D: Document Size: Shows the width, height and resolution and allows you to change them. You can also select a document size preset as well as enable/disable the constrain proportions and lock crop options.

E: Texture Control: Shows the current Texture amount and threshold and allows you to change them.

F: Sharpening & Film Grain: These panes contain the controls for the sharpening and film grain options.

G: Preview Controls: Includes the crop tool for drawing manual crops and moving/sizing document size preset crops, the move tool for repositioning the image in the preview area and the zoom tool for changing the magnification of the preview area. You can also change the magnification using the magnification shortcuts at the top of the navigator.

H: Cancel & Apply Buttons: Cancel closes Genuine Fractals and returns to Photoshop with no change to your image. Apply resizes your image and applies your sharpening and film grain options and returns the modified image to Photoshop.

Navigating the Preview

Genuine Fractals provides several tools to help you navigate our image in the preview area. You can zoom and pan your image to scrutinize your settings and judge the quality of your results at your final output size.

Using the Zoom Tool

Zooming changes the view of your image onscreen only. Zooming is a viewing operation, not a resizing (resampling) operation, and does not affect your image. There are two ways to zoom in on an image:

- Zoom tool
- Zoom presets in the Navigation pane

Using the Zoom tool and the Navigation pane are the same operation except that the Zoom tool centers the new view where you clicked in the image.

To zoom on an image using the Zoom tool:

1. Select the Zoom tool by clicking on the Zoom tool icon, located on the Genuine Fractals toolbar at the lower right side of the Work Area.
2. Click on the image in the Preview window. A new, zoomed in view appears centered at the point where you clicked.



Double-Clicking on the Zoom tool icon will set your zoom setting to 1:1 (100% or actual pixels). This is the best setting for judging quality and for adjusting the Texture Controls as well as the Sharpening and Film Grain.

Using the Pan Tool

Panning allows you to reposition the image inside the preview area. There are two methods for panning an image:

- Clicking and dragging in the Navigation pane
- Pan tool

To pan an image with the Pan tool:

1. Click the Pan tool icon on the Genuine Fractals toolbar at the lower right side on the Work Area.
2. Click and hold anywhere on the image in the Preview window, then move the cursor to view areas outside the window. Again, the red outline in the Navigation pane at upper right shows you what portion of the image the Preview window is displaying.



Double-Clicking on the Pan Tool will set the zoom to fit to screen, allowing you to see the entire image in the preview area.

Using the Navigator

The Navigator pane gives you a complete birds-eye view of your image. The red region of interest indicator marks the area of your image that is visible in the preview pane. You can pan your image by clicking and dragging inside the red region of interest indicator. At the top of the Navigator pane are several Zoom presets. To activate a Zoom preset simply click on it.



Adjusting the Image Size

In Genuine Fractals you can adjust your image size using either the Pixel Dimensions or Document Size panes. The information in these panes are inter-related and locked together. Adjusting the values in either pane will result in changes in the other pane. To help explain this let's use the example below.

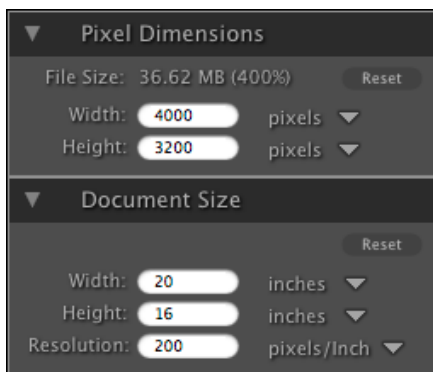
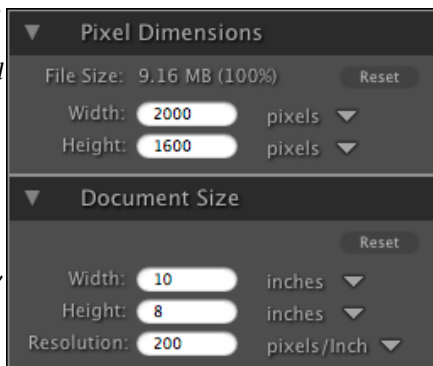
The original image is 10"x8" at a resolution of 200 pixels per inch. Notice that the pixel dimensions are 2000 x 1600 pixels.

- 2000 px = 10"x200 ppi
- 1600 px = 8"x200 ppi

By changing the width to 20" the height changes to 16" proportionally and automatically and the new pixel dimensions change to 4000 x 3200 pixels. Note the resolution does not change.

- 4000 px = 20"x200 ppi
- 3200 px = 16"x200 ppi

Note the the file size and percentage have changed as well.



Follow these steps to adjust the size of your image to what is desired for your output file.

1. Launch Genuine Fractals 5.
2. Adjust width in the Document Size pane to your desired width. Note that the height will adjust automatically and proportionally.
3. If needed, adjust the Resolution in the Document Size pane to what your printer or other output device needs. See [page 7](#) for more information.
4. Press Apply.

If your image is not going to be printed, but will be principally displayed on a computer or television you may not be concerned with the document size but only the pixel dimensions. In these cases use these steps.

1. Launch Genuine Fractals 5.
2. Adjust the width in the Pixel Dimension pane to your desired width. Note that the height will adjust automatically and proportionally.
3. If needed, adjust the resolution to 72 or 96 ppi.
4. Press Apply.



When you launch Genuine Fractals it remembers the last used settings. This will show your preview already zoomed. Be sure to hit the reset button in either the Pixel Dimensions or Document Size pane to start.



Keep the proportions in mind because the proportions of films, digital camera sensors and papers can all be different. For example most digital cameras sensors are proportioned so that the height is two thirds the width or 1:1.5; While the most common paper size, in the US, is letter which is 8.5x11 inches or a about 1:1.25. These kinds of proportion mis-matches are common and require that the original image be cropped to fit the proportions of the paper size. If your image cannot be cropped without ruining the composition then you will need to adjust your print size to longer dimension.

Using Genuine Fractals

Cropping Tool

The cropping tool in Genuine Fractals 5 has been completely redesigned. It is much more intuitive to use and combined with the new document size presets it offers an easy way to crop and resize your images in a single step. You can use the cropping tool in two ways:

- *Manually, by dragging out a crop region with the crop tool.*
- *Using Document Size Presets which lock the document size and draws a proportional crop box that can be sized and positioned.*

To use the crop tool manually follow these steps:

1. Select the crop tool by clicking on the crop tool icon located in the tool bar at the bottom right of the workspace.
2. Then click and drag from the upper-left to the lower-right of the area that you wish to keep inside the crop area.

Note that the Pixel Dimensions and Document Size panes will update in real-time as you draw the crop box. The crop box is divided into thirds horizontally and vertically to aid in composition.

Once a crop box is drawn it can be moved by clicking and dragging inside of it with the crop tool. It can also be resized by clicking and dragging on any of the corner handles.

After defining the crop box you can change the Pixel Dimensions and Document Size fields to resize your image. Note that the proportions of the crop box are locked and that you can only change the proportions by dragging on one of the corner handles using the crop tool and not by

changing the values in either the Pixel Dimensions or Document Size panes.



When you draw a crop box you will see the area outside the crop hidden by a red mask. This is the area that will be removed by the crop. There are control handles at each corner and side that you can use to change the proportions of the crop box. Click and drag in the center to reposition the crop box. There are also rules of thirds guides superimposed to help with composing your crop.

Using Document Size Presets

Document size presets allow you to crop and resize your image at the same time. Often when you are using Genuine Fractals it is to create a file for print output at a known common size. In these cases using a Document Size Preset can be the fastest way to set your needed Document Size

User Guide | Genuine Fractals 5

and crop your image to the needed proportions. Follow these instructions to use a Document Size Preset:

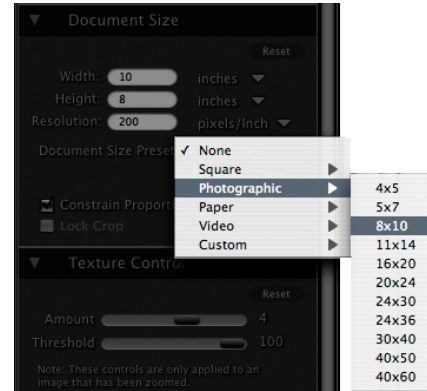
1. Select your image and launch Genuine Fractals.
2. Select your desired size from the Document Size preset pull-down in the Document Size pane.
3. You will see that the Document Size fields will be completed automatically for you and that a crop box is drawn on your image matching the proportions of the Document Size Preset that you selected.
4. If needed, select the rotate crop box to rotate your crop box to the proper orientation.
5. Now you can use the crop tool to reposition and change the size of the crop box so that it contains just the image area that you want. Note that the crop box proportions and Document Size are locked so that you will always the finished document size that you requested.
6. Adjust your resolution to what is needed for your output device.



If you select the incorrect Document Size Preset you can change it simply by selecting a different one. If you do not wish to use a Document Size Preset after you have selected one you can select "None" from the top of the Document Size Preset pull-down or just click once outside of the crop region with the crop tool to clear a crop at any time.

Constrain Proportions

The constrain proportions option locks the original image proportions so that when you change a value, like width, in the Pixel Dimensions or Document Size Preset panes the height will adjust automatically. This function is on by default and is always recommended to use. By turning Constrain Proportions off you can inadvertently stretch and distort your image.



Selecting a Document Size Preset. There are options for common square, photographic, paper and video sizes. You can also create and manage your own custom sizes as well.

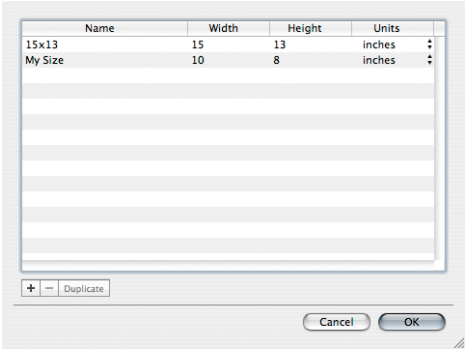
Lock Crop

The lock crop option locks the proportions and document size settings for the given crop. This is enabled by default when you use a Document Size Preset.

Creating a Custom Document Size Preset

Genuine Fractals 5 comes with many commonly used print, paper and video Document Size Presets but also allows users to create their own. To create your own Document Size Preset follow these instructions:

1. Select your image and launch Genuine Fractals
2. From the Document Size preset pull-down, select Custom > Manage Custom Sizes...
3. Click on the plus icon (+)
4. Double-click on the highlighted untitled name and name your preset.
5. Double-click on the width and height and fill in the proper values.
6. Double-click on the units and select the proper document size units.
7. Click on the Okay button.



Manage Custom Sizes dialog. This allows you to create, duplicate, edit and delete your own Document Size Presets.

Texture Control

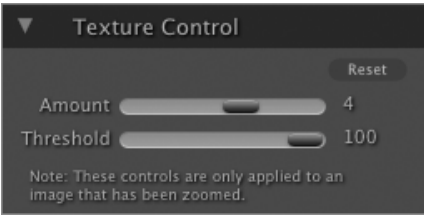
The Genuine Fractals algorithms have been improved to provide higher quality scaling results. There are two new algorithm variables that may be adjusted by the user. They are located in the Texture Control pane and are labeled Amount and Threshold. The default positions are 3 and 25 respectively. Using these settings will provide results equivalent to Genuine Fractals 4.1. Adjusting these variables on an image by image basis can provide improved detail in non-edge regions that contain detail such as textures (grass, fabric, bark, other natural and man-made patterns). Below is a description of each control and recommendations of how to use them.

Amount: This controls the amount of detail in flat, non-edge areas of an image. If your image contains lots of minute detail that does not have defined edges (many organic patterns like leaves, rock, bark; or man made patterns like fabric) it may be good to increase the amount to a setting of 4 or 5. Settings beyond 5 will often introduce a bumpy noise pattern which is undesirable unless your original image was from scanned film. Settings lower than the default 3 are useful for images with large areas of continuous tone that have no appreciable detail (sand, snow, sky) but have

hard edged foreground subjects such as landscape images, architecture or portraiture.

Threshold: This controls the amount of hard edge detail that is enhanced. The default setting is 25. Decreasing the threshold will focus the algorithms only on edge information. This may be useful for portraiture or for reducing noise in your image. Settings higher than 25 will increase the amount of small detail in flatter areas of the image. Settings as high as 100 are useful for highly detailed images such as hair or feathers. Higher threshold settings will also make Genuine Fractals process faster.

A good way to start adjusting these controls is by setting the threshold to 100 and then move the amount up until the image is too noisy (bumpy) and then reduce the threshold to smooth out the noise in continuous tone areas. For detailed images with no little continuous tone you might try the Amount at 4 and the Threshold at 100. For portrait images or images with significant JPG artifacts you should try an Amount of 2-3 and Threshold of 25 or lower.



Texture Control Pane: Contains the Amount & Threshold controls. Note that these controls only effect and image that has been resized. The default setting is Amount 3 and Threshold 25. You can reset the controls to the default by pressing the reset button.

Sharpening

New to Genuine Fractals 5 is the Sharpening pane. This contains the controls to add an Unsharp Mask style sharpening similar to what Photoshop provides. Using the Sharpening controls can save you the workflow step of adding additional sharpening before printing and can help compensate for loss of sharpness due to dot gain from your printer. Sharpening should only be applied at the end of your workflow just before printing. If you plan to do additional retouching or compositing work after resizing your image you should disable the Sharpening controls.



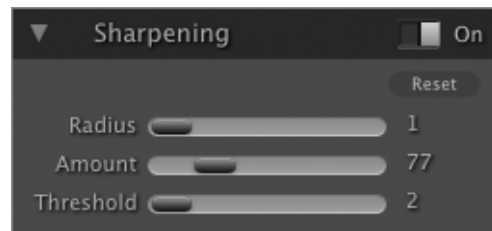
Keep in mind that this sharpening is applied to the entire image area. If you wish to use selective sharpening or a third party sharpening tool like Nik Sharpener you should disable the Sharpening controls in Genuine Fractals.

To sharpen your image for output use these steps after you have adjusted the Document Size pane controls.

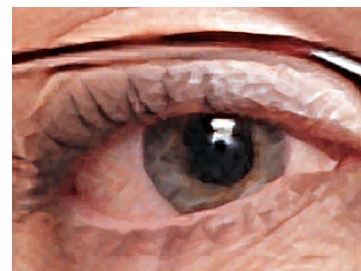
1. Zoom in on your image to 1:1. You can do this easily by using the 1:1 Zoom preset located in the Navigator pane.
2. Enable the Sharpening controls by toggling the on/off control in the Sharpening pane title bar.
3. If your original image was sharp start by setting the Radius slider to 1 or 2. If your original image was not sharp try a higher setting of 2 to 4.
4. Set the Threshold slider to zero (0)
5. Adjust the Amount slider up in increments of 25 until the image in the preview looks slightly over-sharp. You can tell this when the image begins to look artificial or artifacts along edges start to appear. Settings of 75 to 150 are typical.

6. Now adjust the Threshold slider up to reduce the sharpening effect and artifacts. A setting of 4 to 10 is usual.

You can toggle the Sharpening controls on and off to help preview the effects of the Sharpening only.



Sharpening Off



Sharpening On

Film Grain

Also new to Genuine Fractals 5 is the Film Grain pane. This contains the Film Grain amount control which adds simulated Film Grain (noise) to your image. Adding a modest amount of Film Grain can make your image appear sharper visually and can help hide imperfections like JPG artifacts. This is especially useful for monochrome images. Film Grain should only be added at the same time as

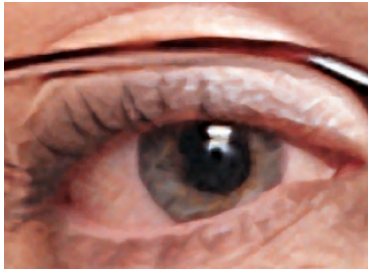
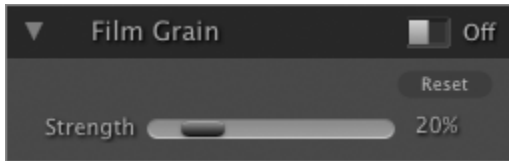
User Guide | Genuine Fractals 5

Sharpening, just before printing. If you need to do other retouching or compositing work in Photoshop after resizing your image you should disable the Film Grain controls.

To add Film Grain to your image follow these steps:

1. Zoom in on your image to 1:1. You can do this easily by using the 1:1 Zoom preset located in the Navigator pane.
2. Enable the Film Grain controls by toggling the on/off control in the Film Grain pane title bar.
3. Adjust the slider up or down until the desired amount of Film Grain is added.

You can preview just the effect of the Film Grain by toggling the Film Grain on/off control.



Film Grain Off



Film Grain On

Using STiNG Files

What is a STiNG File?

STiNG (.STN) files are a special compressed file that Genuine Fractals can create. STiNG files allow you to save a single resolution independent file that can be scaled to any size when it is opened. This can help reduce the amount of space that is required for storage and bandwidth needed for transmission.

Because Genuine Fractals 5 is fully integrated into Photoshop as an automation plug-in, you can now use Genuine Fractals to scale any image supported in Photoshop without having to encode it to STN (“Sting”) format. Simply use the Genuine Fractals plug-in for cropping and scaling, then close the Genuine Fractals window and save images – in whatever format you choose – as you normally would within the familiar Photoshop interface.

Saving STiNG Files

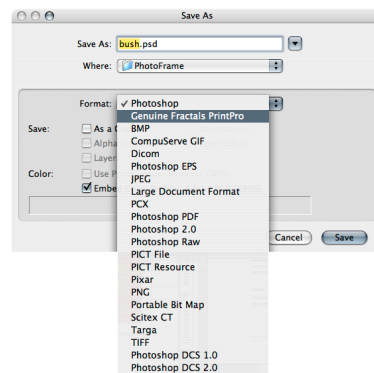
While it is no longer necessary to save images to STN format before you can scale them with Genuine Fractals, some users may wish to do so. Any 8- or 16-bit RGB, CMYK image and any 8-bit grayscale image can be saved in STN format. The Genuine Fractals’ STN format is available on the list of formats in the Save As... dialog box in Photoshop, shown below. See your Adobe Photoshop documentation for more information on saving files.



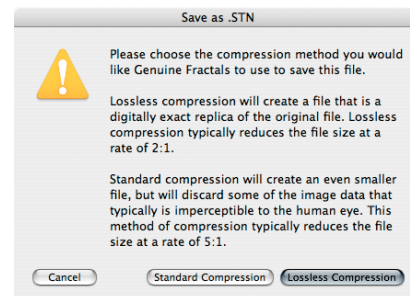
STiNG files do retain embedded icc color profiles but do not retain layers, clipping paths or alpha channels.

To save a file as a STiNG format follow these instructions:

1. In Photoshop go to File > Save As...
2. From the format pull-down select Genuine Fractals



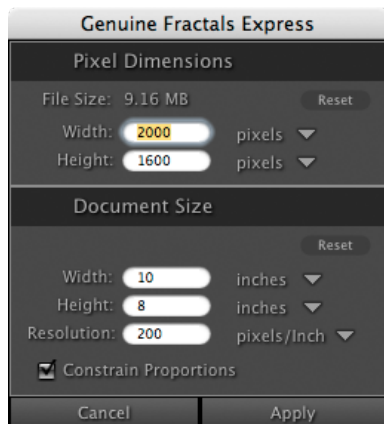
3. Select between Lossless and Standard compression in the dialog that appears.



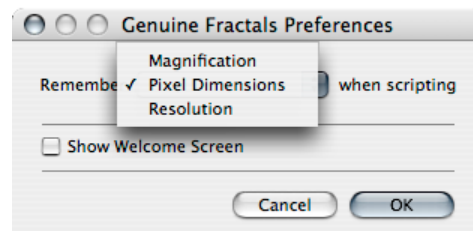
Lossless compression creates a file that is approximately half the size of the original file that is identical pixel by pixel to the original file. Standard compression creates a file that is approximately 1/5th the size of the original file and is visually lossless.

Opening STiNG Files

To open a STiNG file use the open command from inside of Adobe Photoshop or Photoshop Elements. When you open a STiNG file you will be presented with the Genuine Fractals Express 5 dialog. It will show the original size of the file when it was saved. If you simply want to open the file at its original size click on Apply. If you want to change the size of the file you can enter new values into the Pixel Dimensions or Document Size panes to resize the STiNG file on-the-fly as you open it.



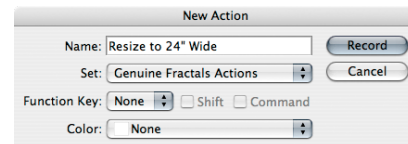
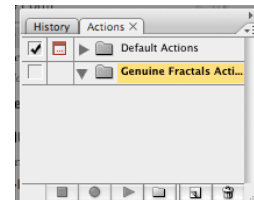
control which method is used by adjusting the Preferences in Genuine Fractals. The default is Pixel Dimensions.



Recording an Action

To record an action to resize to a particular size follow these steps:

1. Open your image in Adobe Photoshop.
2. From the action palette click on the new action icon.
3. Name your action and click on record.
4. Photoshop is now recording all of the steps you take in Photoshop and Genuine Fractals. Go ahead and launch Genuine Fractals.



5. In the Document Size pane type in the size of the final file you would like. You can also adjust the other panes controls such as Texture, Sharpening and Film Grain, they will also be recorded. When you are done click Apply.
6. When Genuine Fractals has completed and returned your image to Photoshop hit the stop recording button in the actions palette.

Automating Genuine Fractals

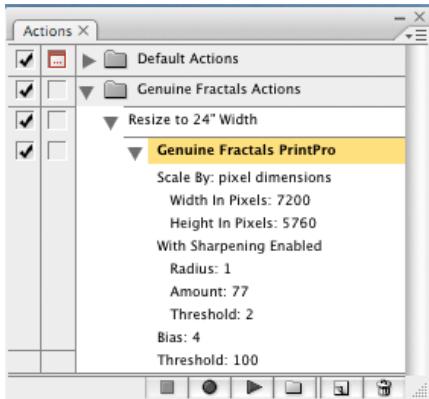
You can automate Genuine Fractals using the actions palette in Adobe Photoshop. This allows you to create actions for opening Genuine Fractals as well as applying Genuine Fractals automatically to an image or folder of images to resize them to a given pixel, document or resize percentage.

Genuine Fractals Preferences

When recording an action, Genuine Fractals will instruct Photoshop to remember either the pixel dimensions, document size or the resize scaling percentage. You can

User Guide | Genuine Fractals 5

You can then examine the steps that were recorded in your action. Note that the scale by option is determined by your preference set in Genuine Fractals.



You can now use this action by opening an image and clicking on the play button in the action palette to automatically resize the image to the specifications recorded in the action.



If the proportions of your image do not match the proportions of the file used to record the action, Genuine Fractals will maintain the proportions of our file and will resize both the width and height to fit inside the recorded dimensions.



You can use the show dialog option in the Photoshop action palette to let you adjust the settings in Genuine Fractals before you hit apply. The action will still open Genuine Fractals and set all of the control values first.



You can use the actions you create to batch process and entire folder of images to the same size. Use the Batch command in Photoshop located in the File > Automate menu. See the Photoshop user guide or the onOne website for instructions on how to do this.

Menus

Photoshop (Mac OS X Only)

About Genuine Fractals: Opens the Genuine Fractals about box, displaying your serial number as well as legal information and version numbers.

Check for Updates: Checks with the onOne update server to see if you are running the current version. If you are not you will be notified that an update or upgrade is available and the dialog will help you download or purchase the update or upgrade. Genuine Fractals will automatically check for updates on a periodic basis in the background.

Genuine Fractals Preferences: Opens the Genuine Fractals preference dialog where you can control what method is recorded when using a Photoshop action. You can also enable the Welcome screen at start-up if you disabled it.

File

Close: Closes Genuine Fractals without applying it. Equivalent to canceling.

Apply: Applies the current settings to your image and returns it to Photoshop.

About Genuine Fractals	
Check for Updates...	
Genuine Fractals Preferences...	⌘, Preferences
Services	
Hide Photoshop	⌘H
Hide Others	⌘H
Show All	
Quit Photoshop	⌘Q

Close	⌘W
Apply	⌘\

User Guide | Genuine Fractals 5

Edit

Undo: Steps back through the last change you made in any of the control panes.

Redo: steps forward through the next change you made in any of the control panes.

Cut: Cuts the currently selected text to the clipboard.

Copy: Copies the currently selected text to the clipboard.

Paste: Pastes the text from the clipboard into the current text field.

Reset All: Resets all controls back to their default state.

Undo	⌘Z
Redo	⇧⌘Z
Cut	⌘X
Copy	⌘C
Paste	⌘V
Reset All	⇧⌘Z

View

Zoom-In: Zooms in on the preview image.

Zoom-Out: Zooms out on the preview image.

Fit to Screen: Zooms the preview image so that it fits completely in the preview area. This best for cropping.

Actual Pixels: Zooms the preview to 1:1 (100%) so you can see every pixel in the image. Use this setting when adjusting Texture, Sharpening and Film Grain controls.

Zoom-In	⌘+
Zoom-Out	⌘-
Fit to Screen	⌘0
Actual Pixels	⌘0

Window

Navigator: Opens and brings into view or closes the Navigator pane.

Pixel Dimensions: Opens and brings into view or closes the Pixel Dimensions pane.

Document Size: Opens and brings into view or closes the Document Size pane.

Texture Control: Opens and brings into view or closes the Texture Control pane.

Sharpening: Opens and brings into view or closes the Sharpening pane.

Film Grain: Opens and brings into view or closes the Film Grain pane.

Show Welcome...: Opens the Welcome Screen that appears when you launch Genuine Fractals. This provides basic step-by-step instructions for resizing your image.

Navigator	⌘1
Pixel Dimensions	⌘2
Document Size	⌘3
Variables	⌘4
Sharpening	⌘5
Film Grain	⌘6
Show Welcome...	

Show Me How

Getting Started...: Launches a movie player and plays the Getting Started tutorial movie.

Getting Started...
Advanced Techniques
View All Tutorials...

Advanced Techniques...: Launches a movie player and plays the Advanced Techniques tutorial movie.

View All Tutorials...: Launches a web browser and navigates to the tutorials section of the onOne website.

Help

Genuine Fractals Help: Opens this user guide in the Acrobat reader.

Genuine Fractals Help	⌘?
-----------------------	----

Supported File Types

	Genuine Fractals	Genuine Fractals Print Pro	STiNG Files
RGB 8-bit	✓	✓	✓
RGB 16-bit	✓	✓	✓
Grayscale 8-bit	✓	✓	✓
Grayscale 16-bit	✓	✓	✓
LAB 8-bit	✓	✓	✗
LAB 16-bit	✓	✓	✗
CMYK 8-bit	✗	✓	✓
CMYK 16-bit	✗	✓	✓
Photoshop Layers	✓	✓	✗
Alpha Channels	✓	✓	✗
Paths	✓	✓	✗

Shortcuts

Function	Macintosh Shortcut	Windows Shortcut
Close (Cancel)	Cmd-W esc Cmd-.	Cntl-W esc
Apply	Enter Return Cmd-\	Enter Return Cntl-\
Open Preferences	Cmd-,	Cntl-,
Undo	Cmd-z	Cntl-z
Redo	Cmd-shift-z	Cntl-shift-z
Reset All	Cmd-opt-z	Cntl-alt-z
Zoom-In	Cmd-+	Cntl-+
Zoom-Out	Cmd--	Cntl--
Fit to Screen	Cmd-0 double-click pan tool	Cntl-0 double-click pan tool
Actual Pixels	Cmd-opt-0 double-click zoom tool	Cntl-alt-0 double-click zoom tool
Open Navigator	Cmd-1	Cntl-1
Open Pixel Dimension	Cmd-2	Cntl-2

User Guide | Genuine Fractals 5

Function	Macintosh Shortcut	Windows Shortcut
Open Doc Size	Cmd-3	Cntl-3
Open Texture Control	Cmd-4	Cntl-4
Open Sharpening	Cmd-5	Cntl-5
Open Film Grain	Cmd-6	Cntl-6
Open Help	Cmd-?	Cntl-?

Note on Progress Indicator (Mac OS X only)

When applying Genuine Fractals the main Genuine Fractals workspace disappears and Photoshop progress indicator appears. On large and/or multi-layered files this indicator may appear to not be moving. Be assured that Genuine Fractals is working. You can see an accurate progress indicator by looking at the Photoshop dock icon which will also show a progress indicator below it.

